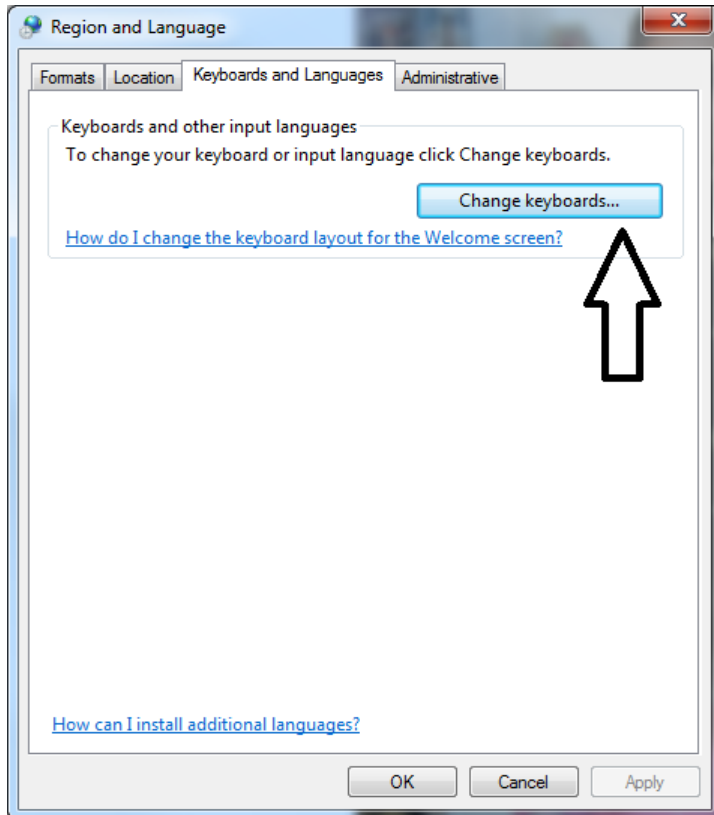
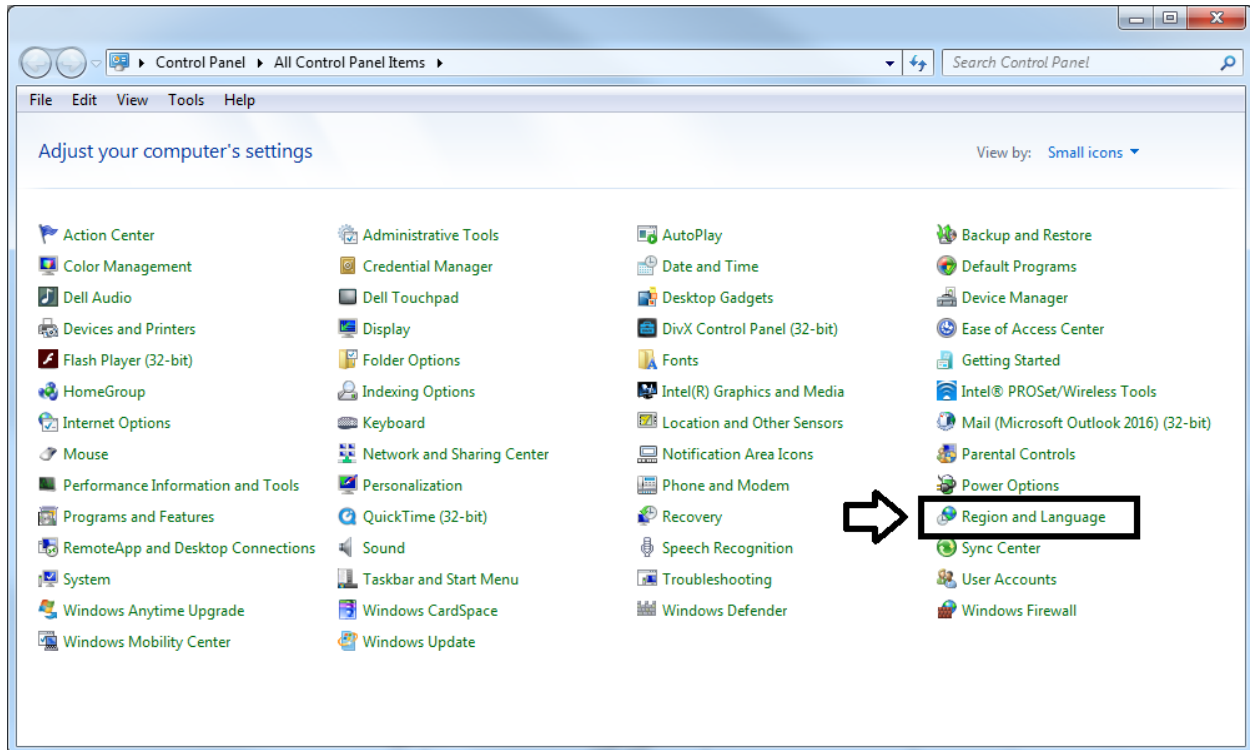
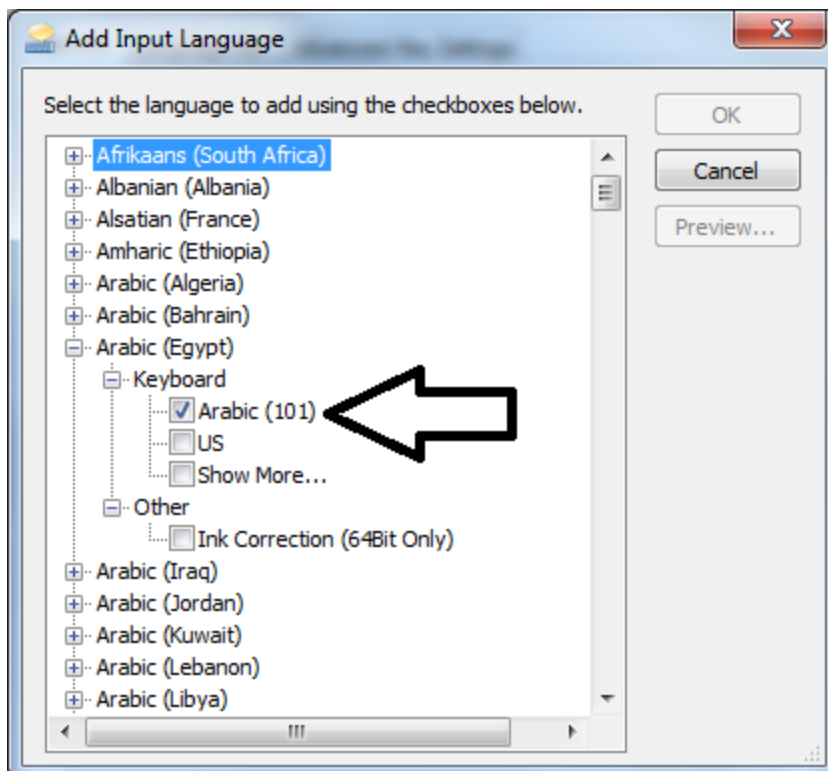
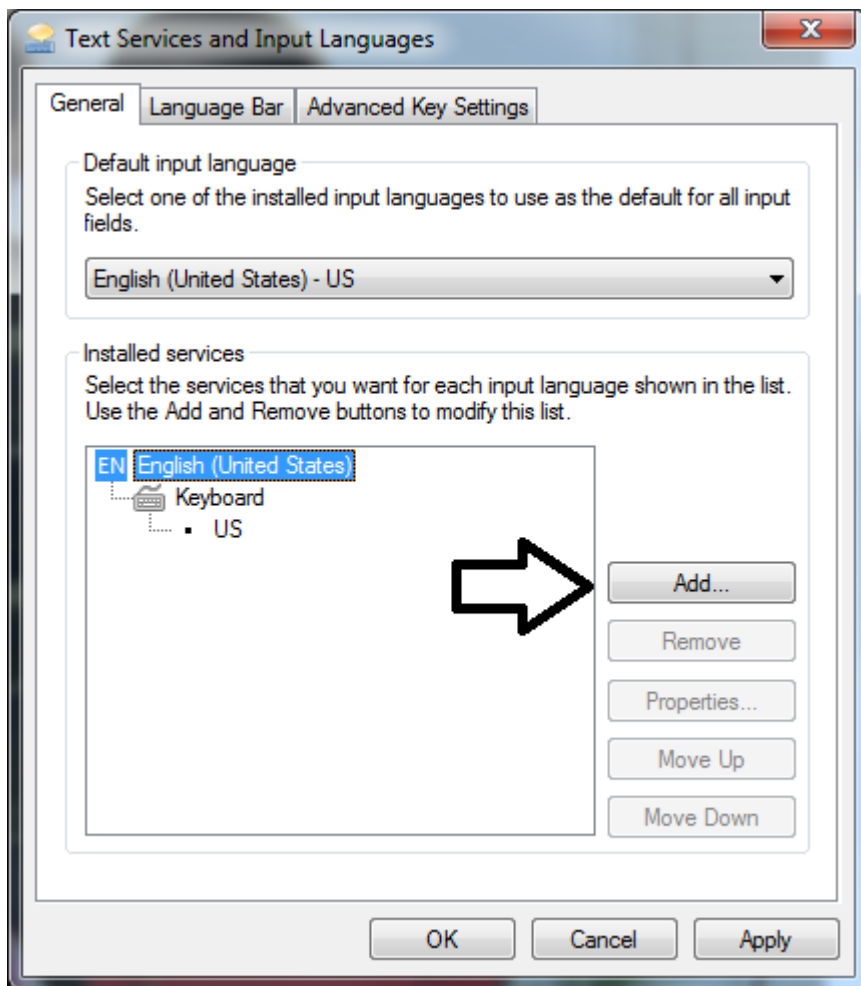
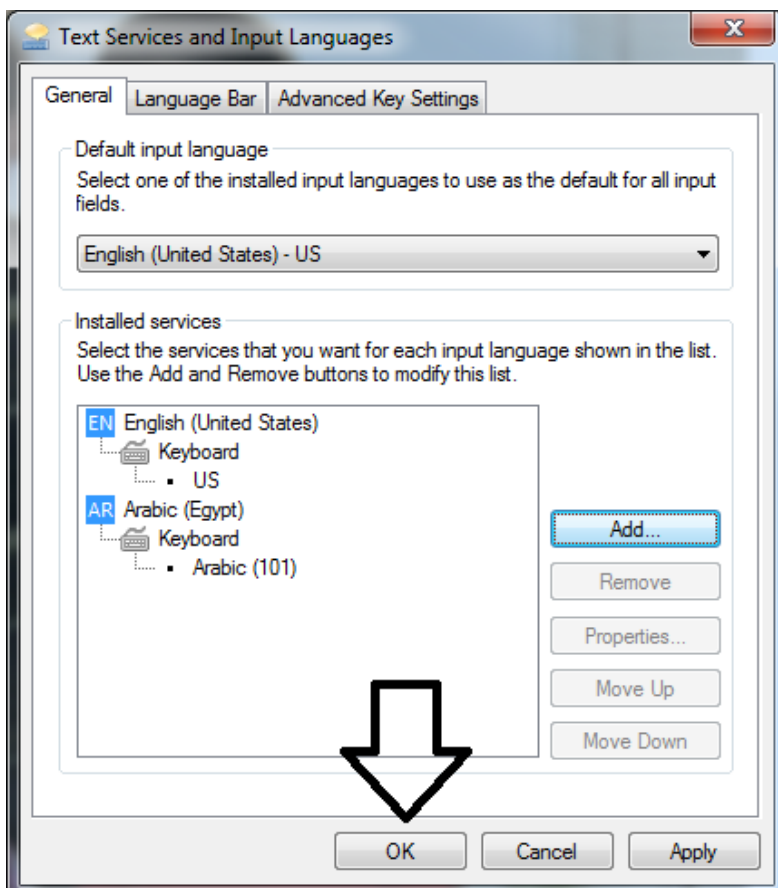
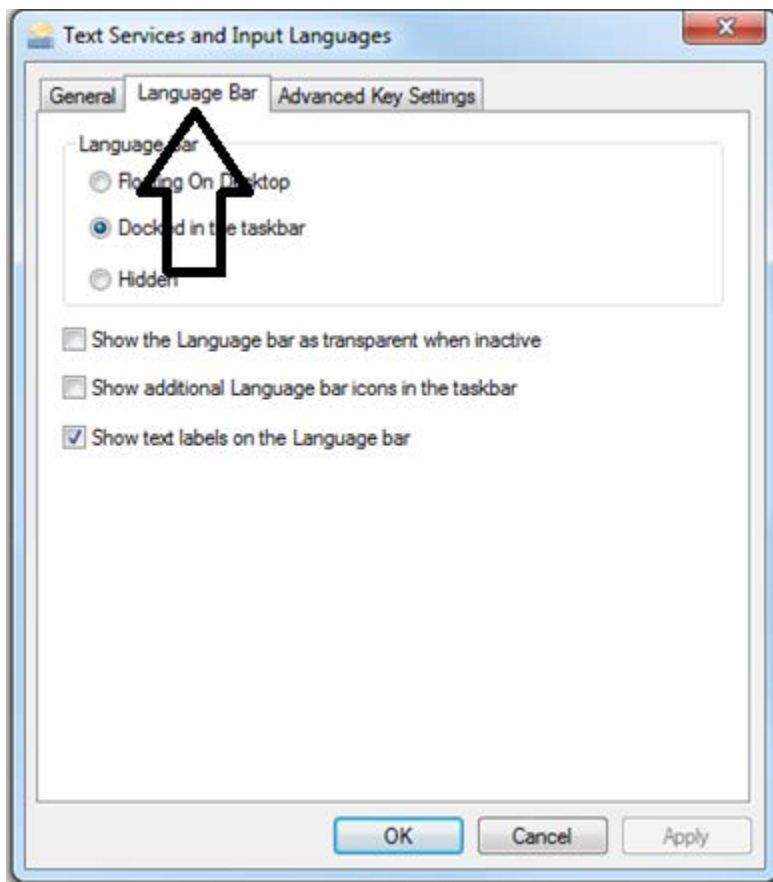


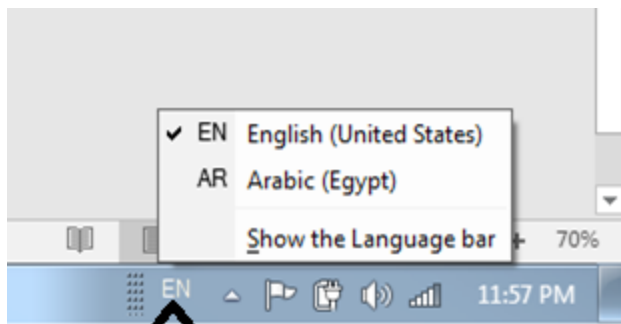
How to add the Arabic Language (or any other language) to your windows

Start the control panel and follow the following steps.



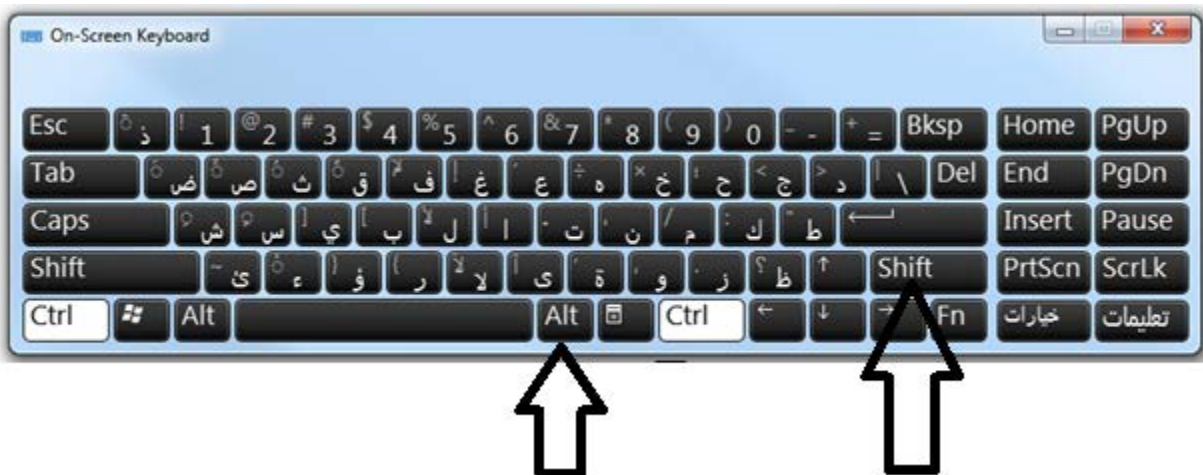




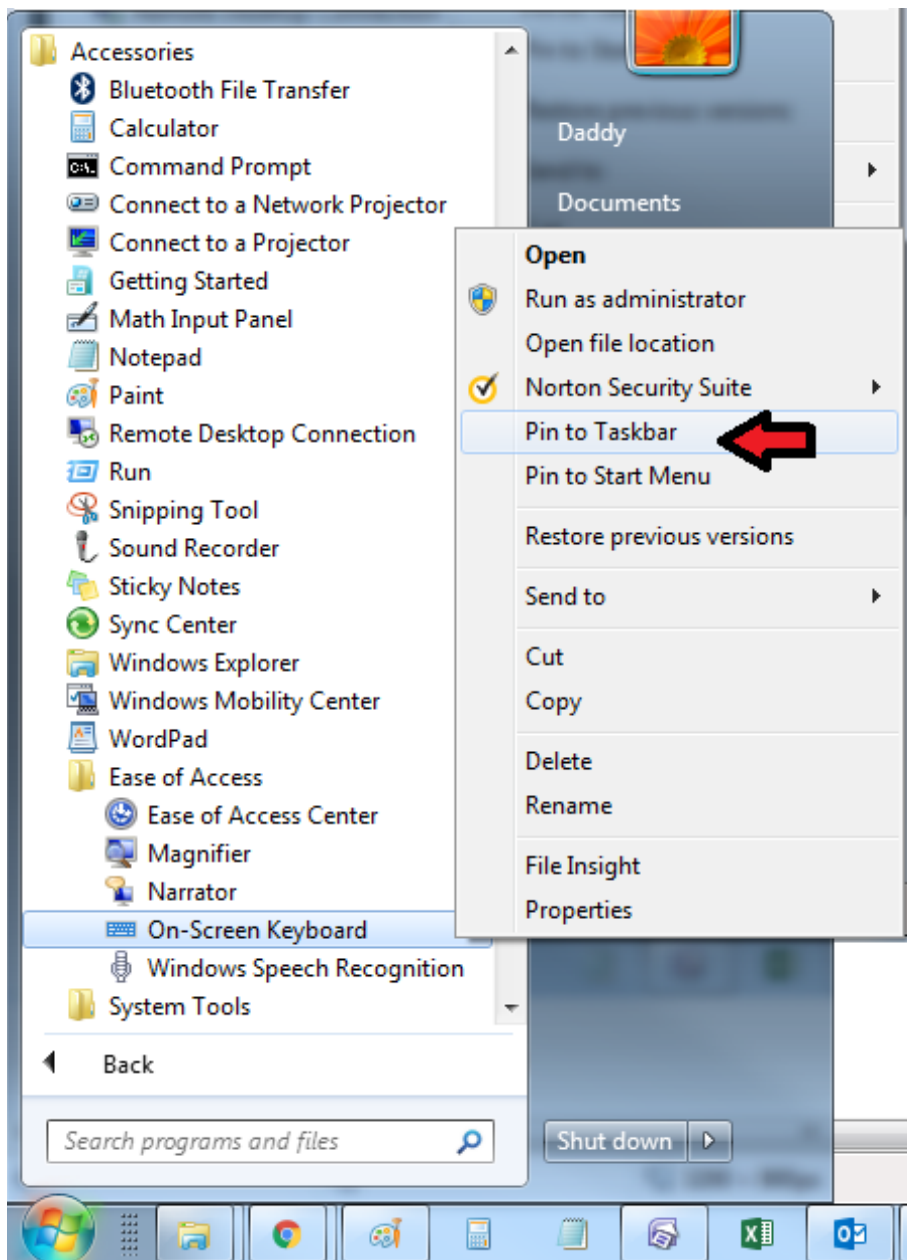


The language button

To switch between languages, you can use the language button. Alternatively, you can use the keyboard. Hold down the ALT key and then click on the SHIFT key. It will switch language. You can do this using the ALT and SHIFT buttons on the left-hand side of the keyboard or the right-hand side.



Follow the following steps to pin the on-screen keyboard button to the task bar





Note: To switch the language of the on-screen keyboard, it has to be selected while switching using either the keyboard shortcut SHIFT+ALT or the language button. If it is not selected, it may not change.